

SAFETY PROTECTIVE SHIELD SCALPEL WITH STEADFAST DISPOSAL LOCK

Compliant with the US OSHA and European Directive
on Prevention of Sharps Injuries

Bistouri de sécurité à enveloppe protectrice avec verrou de blocage. Lame en acier inoxydable

Bisturí de seguridad con cierre desechable. Hoja de acero inoxidable

Bisturi di sicurezza con coprilama autobloccante. Lama in Acciaio Inossidabile

Bisturi de segurança com escudo protector e dispositivo de bloqueio para descarte. Lâmina em aço inoxidável

Sicherheit Schutzschild Skalpell mit Entsorgungsverschluss. Klinge aus Edelstahl

Скальпель из нержавеющей стали

廃棄用のロックを備えた刃に可動性の安全カバーの付いたタイプのセーフティスカルペル。ステンレススチール刃
带可调定位锁和安全防护板的不锈钢刀片外科手术刀

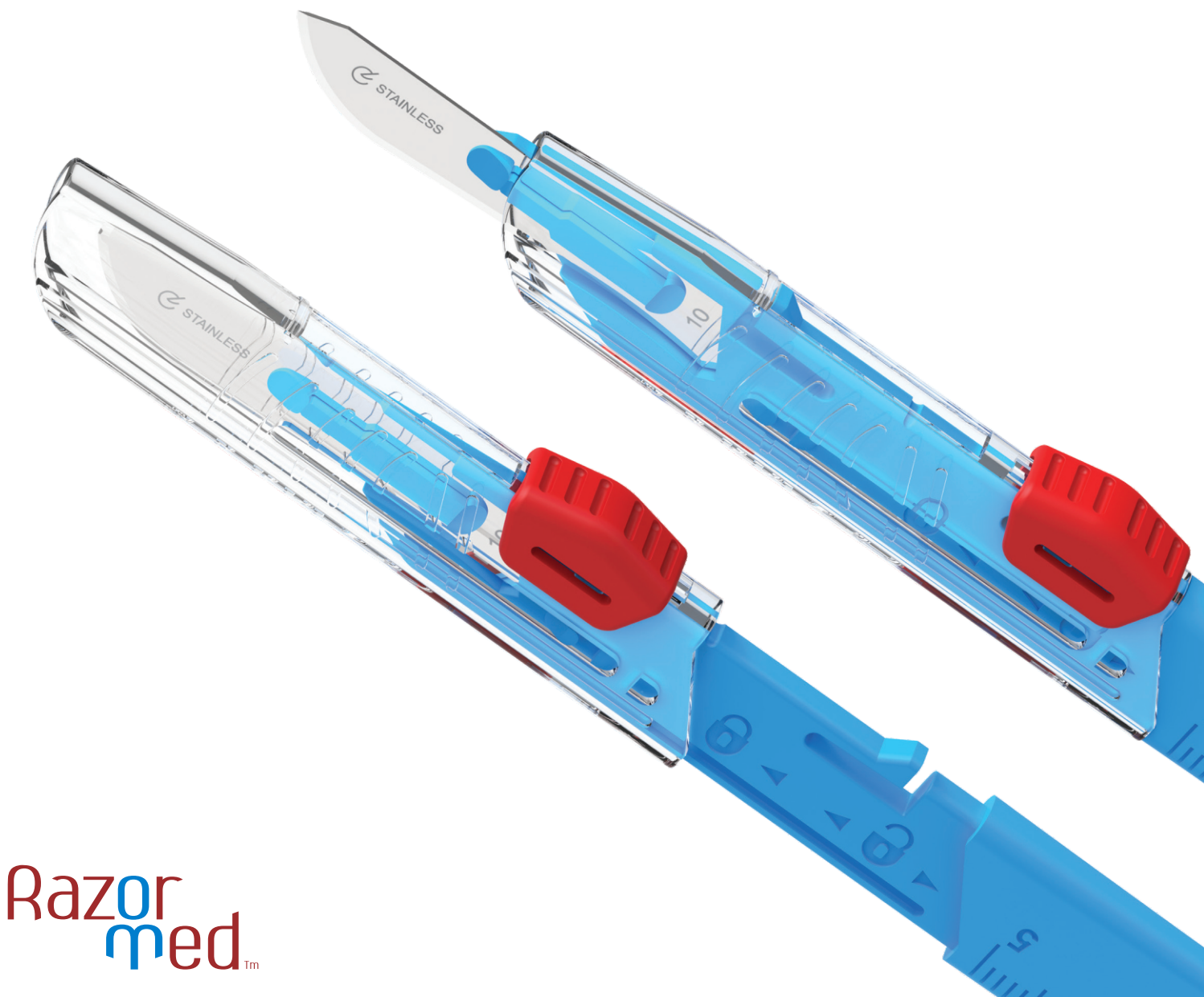


STERILE R

MD



CAUTION
Sharp Blades

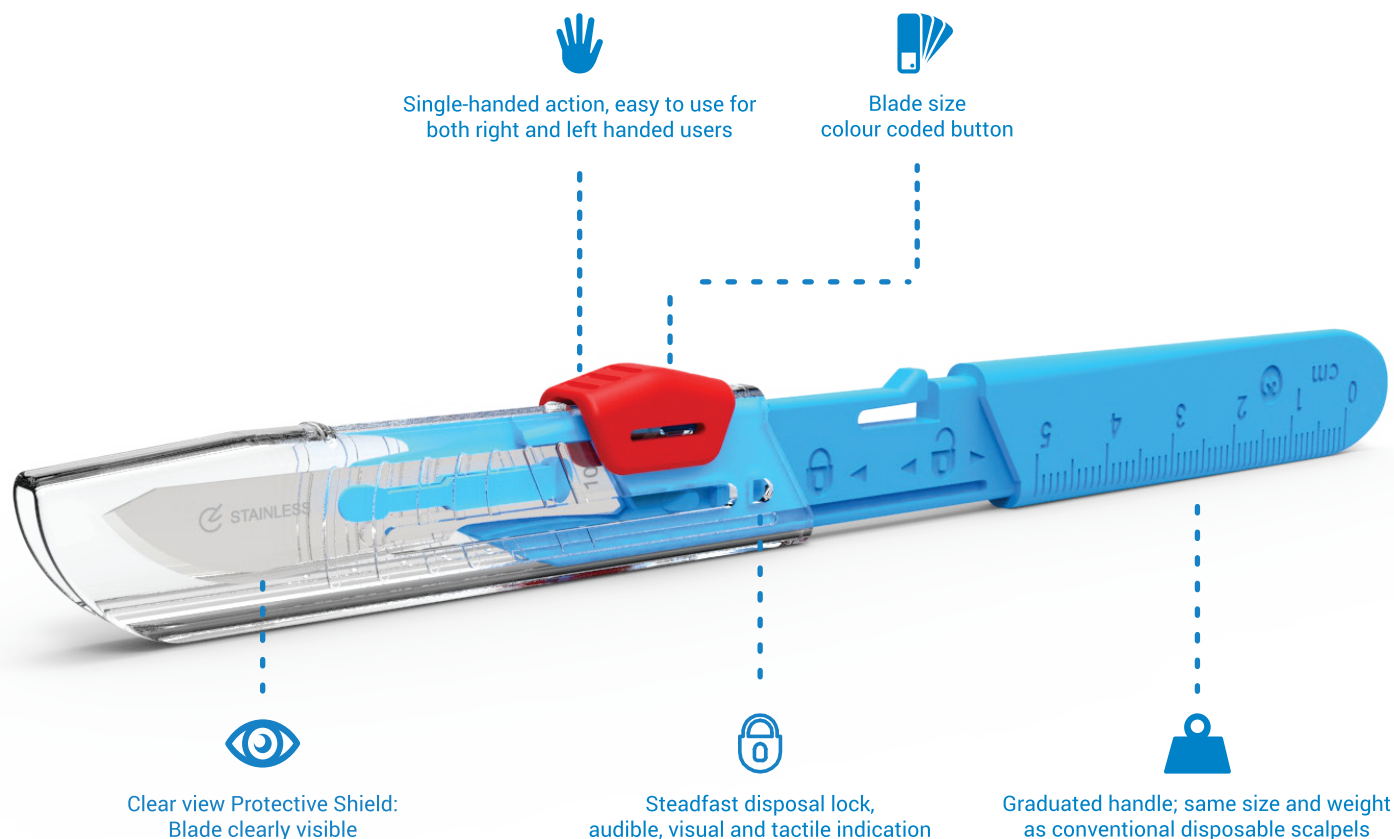


Razor
medTM

View the industry's largest selection of Safety Scalpels at -

www.razormed.com | www.safhandle.com | B-3 Infocity, Sector 33-34, Gurgaon 122001- India | info@razormed.com | +91 124 4338888

SAFETY PROTECTIVE SHIELD SCALPEL WITH STEADFAST DISPOSAL LOCK



PROTECT

A safety-engineered surgical scalpel that will not compromise patient care. The Protective scalpel consists of a clear view shield that protects against injuries before use, between steps of a procedure and after disposal.

The graduated handle is virtually the same size and weight as conventional disposable scalpels. Does not contain natural rubber latex and phthalates.

USE

Requires a simple single-handed action – the activation of the Protective Shield manifests itself by an audible, tactile and visual sign to the user. Provides the assurance so that care-givers can maintain appropriate control.

The colour coded button, located at the top of the handle, is ergonomic to use for both right and left handed users. The Protective Shield will lock into place at use and protect positions.

DISPOSE

After use, the Protective Shield can be steadfastly locked for safe disposal as per national and organisational guidelines.

WIDE RANGE OF STAINLESS STEEL BLADE TYPES AND SIZES:



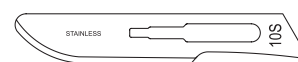
Conventional Blades

Sizes: 10, 11, 12, 12D, 15, 15C, 18, 19, 20, 21, 22, 23, 24, 25



Diamantine™ High Performance Conventional Blades

Sizes: 10, 11, 15, 20, 21, 22, 23, 24



SAFhandle™ Safety Blades

Sizes: 10, 15, 20, 21, 22, 23, 24